

PARCC Results

2015 - 2016

Clinton Township School District



General Information

- 2016 marks the 2nd administration of the Partnership for Assessment of Readiness for College and Careers (PARCC) and the first opportunity to compare year-to-year results as the following slides will show.
- CTSD students took PARCC English Language Arts and Literacy Assessments (ELA/L) in grades 3 – 8.
- CTSD students took PARCC Mathematics Assessments in grades 3 – 8 and End of Course Assessments in Algebra I, Algebra II, and Geometry.
- Seven states and the District of Columbia participated in the Spring 2016 PARCC administration.
- PARCC Spring 2017 Administration window opens as follows
 - March 27, 2017 to April 13, 2017 (three week segment)
 - CTSD Spring Break 4/14 to April 23, 2017
 - **April 14, 2017 to May 19, 2017 (four week segment - our testing period grades 3 - 8)**

PARCC Performance Levels

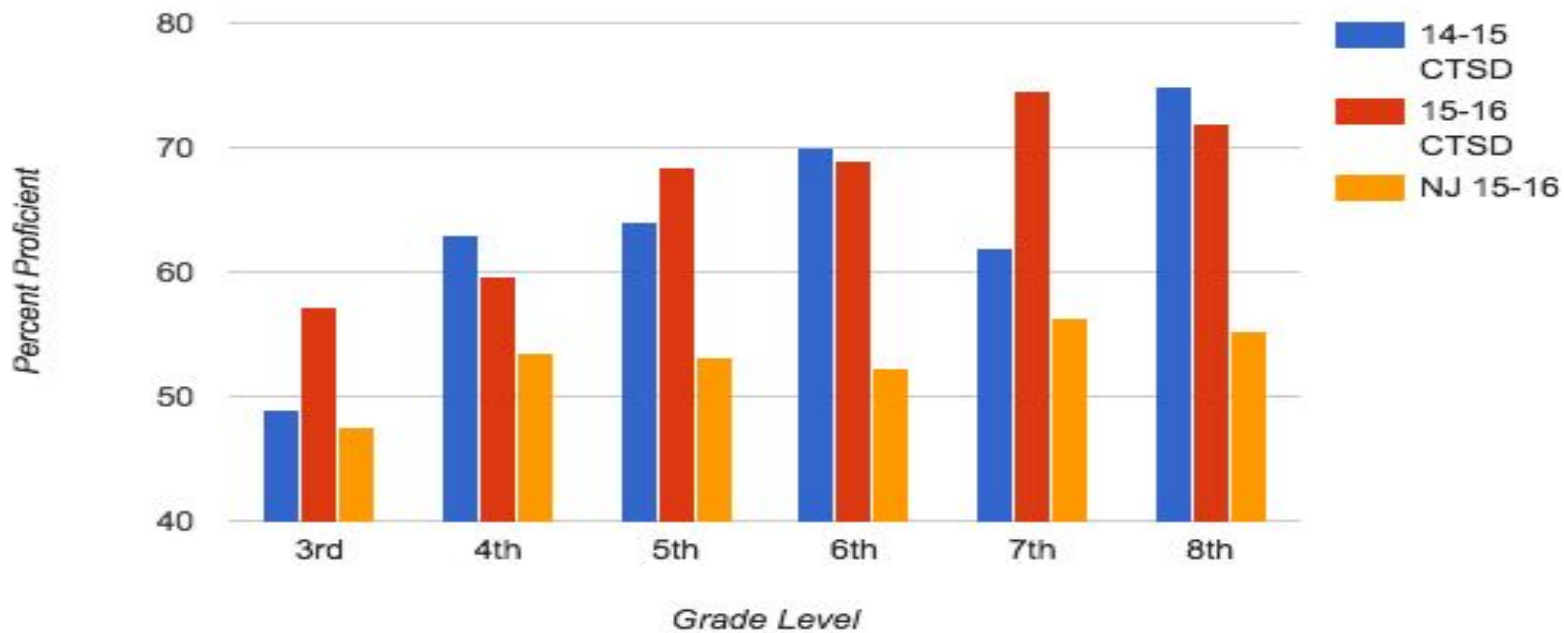
(NJ considers levels 4 and 5 to be passing)

- Level 1: Not yet meeting grade-level expectations
- Level 2: Partially meeting grade-level expectations
- Level 3: Approaching grade-level expectations
- **Level 4: Meeting grade-level expectations**
- **Level 5: Exceeding grade-level expectations**

ELA Graphs

(Levels 4 & 5)

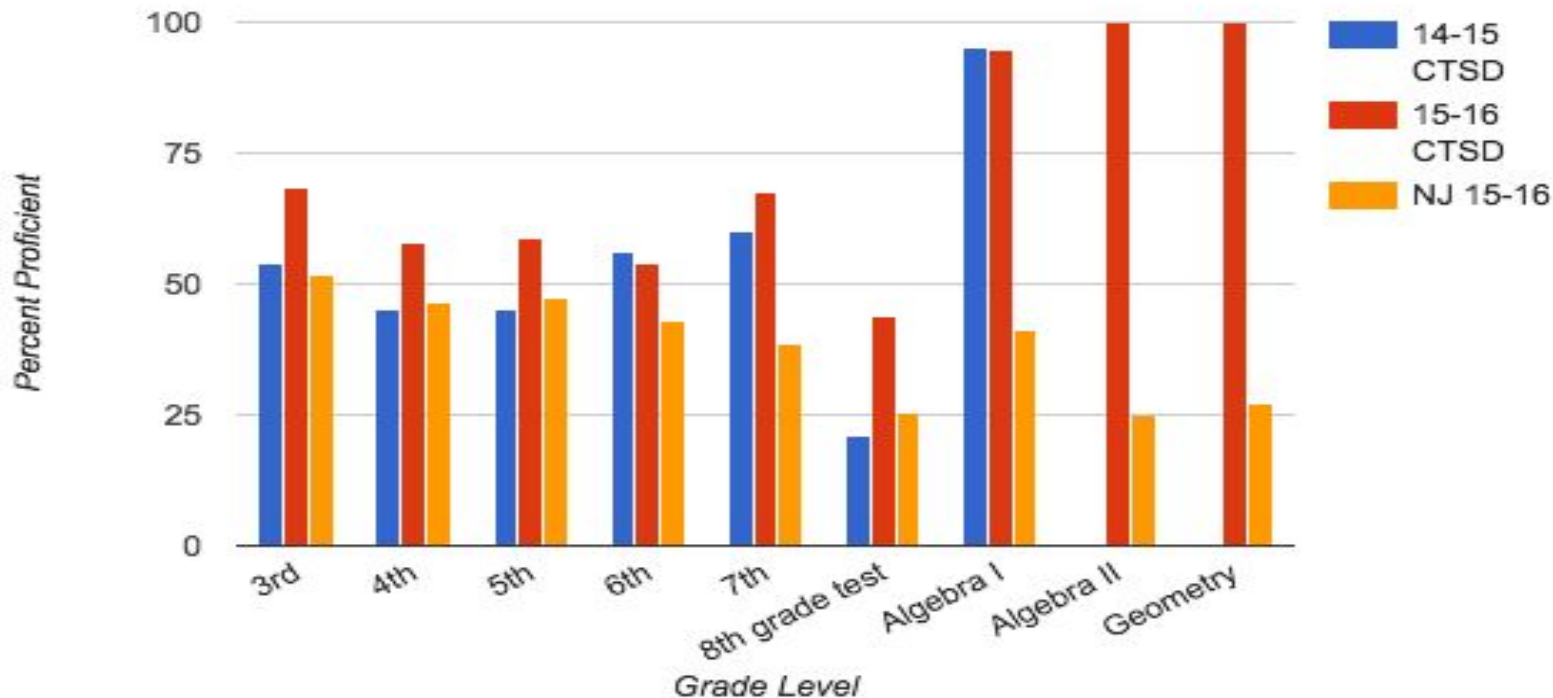
14-15 CTSD, 15-16 CTSD and NJ 15-16



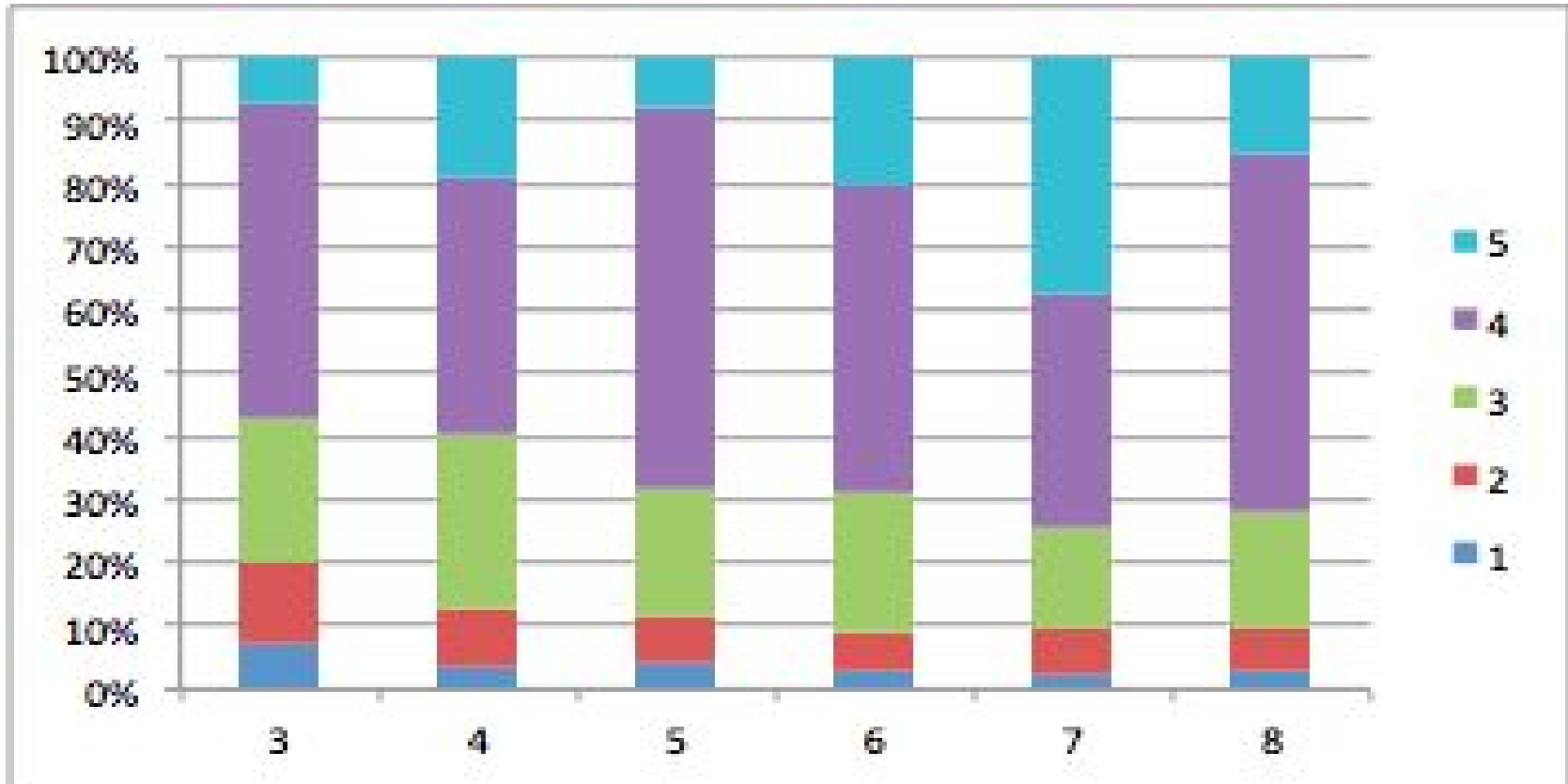
Math Graphs

(Levels 4 & 5)

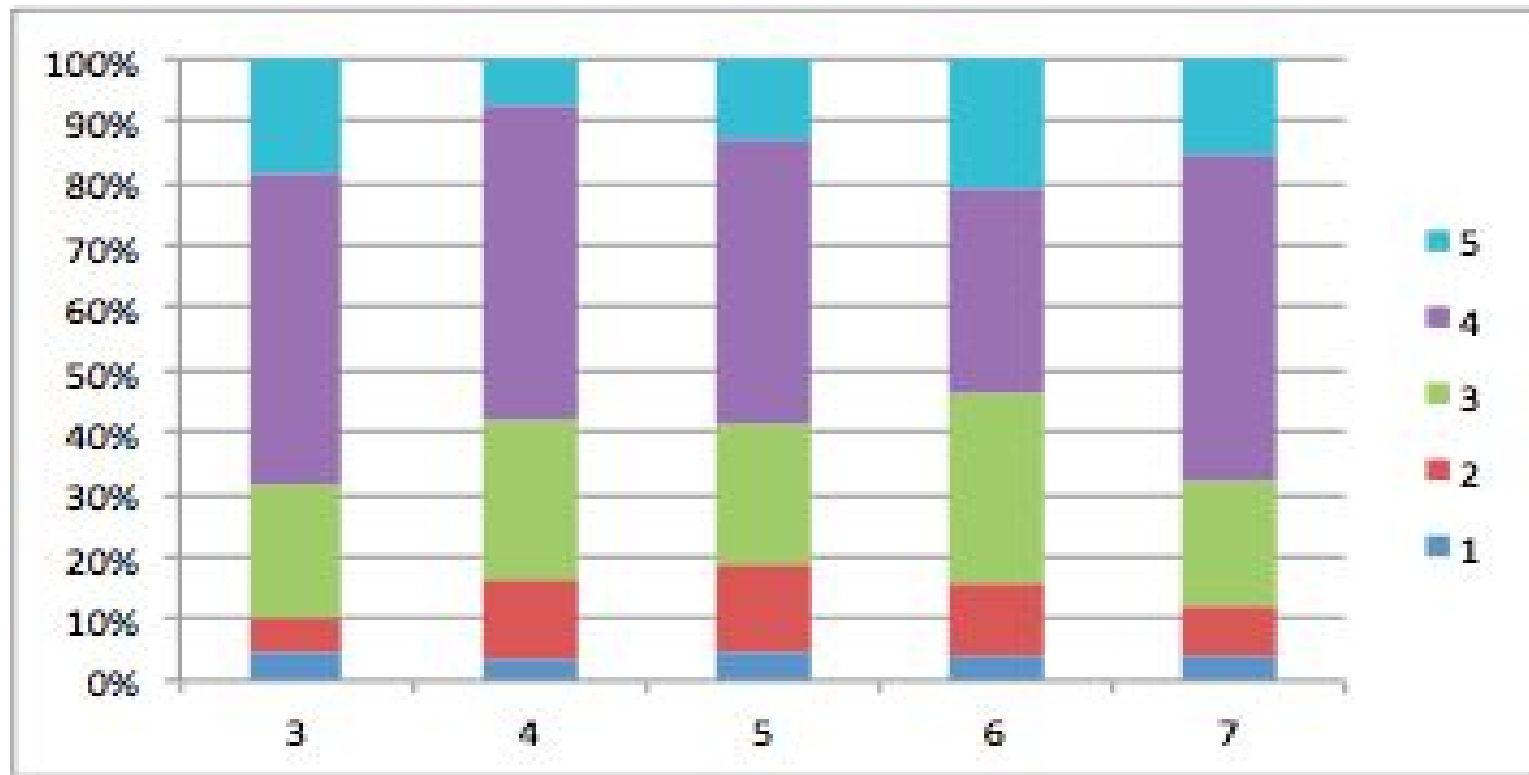
14-15 CTSD, 15-16 CTSD and NJ 15-16



ELA Performance by Level



Math Performance by Level



Next Steps

- **Renaissance Data**
 - Progress Monitoring
 - Aligned to PARCC
- **Evidence Statement Analysis**
 - Grade and Team Level Meetings
- **Instructional Strategies**
 - Cooperative Learning
 - Technology Infused Curricula
- **Assessment Strategies**
 - Performance based
- **Data Analysis by grade level**
 - Monitor Annual Progress